

A N N U A L R E P O R T

CHAUTAUQUA

2 0 2 0



Chautauqua
BOULDER CO





T A B L E O F

CONTENTS

	LETTERS FROM LEADERSHIP	4 - 7
	STRATEGIC ADVANCES IN 2020	8 - 23
	Historic Preservation	
	Education and Outreach	
	Cultural Relevance	
	Community Partnerships	
	Financial Stewardship	
	Operational Excellence	
	Environmental Sustainability	
	Workplace Culture	
	2020 FINANCIAL OVERVIEW	24 - 25
	WAYS TO GIVE	26 - 27
	SPONSORS AND DONORS	28 - 35
	BOARD OF DIRECTORS	36

L E T T E R F R O M T H E

CHAIR, BOARD OF DIRECTORS

Dear Friends of Chautauqua,

The Colorado Chautauqua Association (CCA) has witnessed world events from the Spanish Flu to the Great Depression, international power struggles, the ascendancy of civil rights and women's liberation and recently, the Great Recession – a history now bookended by another global pandemic. Throughout, it has elevated, entertained, offered retreat and respite, but at its core, it has educated.

At our recent annual retreat, CCA's board debated the organization's role in the nation's (and world's) pressing dialogue on justice, equity, diversity and inclusion (JEDI). Would Chautauqua advocate? Probe? Advise? Provide a neutral platform for discussion? And how could Chautauqua add value to the current proliferation of JEDI content? We landed on “educate” not only because this approach is consistent with our mission and values but because it can unravel the complex route to this place in time.

The board further agreed to a two-pronged approach: first, to educate ourselves in JEDI matters, and secondly, to create programming that promotes understanding through the lens of history, self-discovery and current realities.

Our first board conversation drew on Ijeoma Oluo's “So You Want to Talk About Race” and focused on the microaggressions that shape everyday conversation. We shared our own experiences of racism and acknowledged the optimism of our children's world view – one that is increasingly blind to color and class.

With the guidance of our Community Connections Committee (C3), CCA also launched significant JEDI programming with Sarah Bell's presentation on Chautauqua's racist roots and the recent discussion of the Iroquois Confederacy and U.S. Women's Rights. With the board's full support, C3 will continue to explore content that reinforces our commitment to this critical issue at this pivotal moment.

Whether the topic is race, gender, culture, urban/rural, there is much to learn and there are significant divides to bridge. Come join us in this walk!

NAN ANDERSON

Chair, Board of Directors

Colorado Chautauqua Association



Dr. Sally Roesch Wagner and Wakerakatste Louise McDonald Herne.

L E T T E R F R O M T H E

CHIEF EXECUTIVE OFFICER

Dear Friends and Supporters of Chautauqua,

Undoubtedly one of the most tumultuous years in Chautauqua's over-120-year history, 2020 was marked by both a transformational change in Chautauqua's governance structure and the COVID-19 crisis, which hit hard in mid-March and severely impacted every aspect of Chautauqua's operations.

Chautauqua survived by quickly identifying and prioritizing the most critical aspects of our operations, developing a variety of scenarios in response to changing conditions, and taking calculated risks throughout the year to ensure our ability to navigate uncharted waters for an indeterminate time.

Chautauqua not only survived 2020, we advanced our mission in many ways while working hard to keep the community engaged and support other struggling arts and nonprofit organizations. We hope you enjoy reading about our progress in this year's 2020 Annual Report, which focuses on our eight areas of strategic focus: historic preservation, education and outreach, cultural relevance, community partnerships, financial stewardship, operational excellence, environmental sustainability and workplace culture.

Of course, no organization navigates a crisis like COVID-19 alone. So, thank you to all of you, along with our donors and sponsors, our partners at the City of Boulder, the Colorado Music Festival, Z2 Entertainment, Three Leaf Concepts, the Scientific and Cultural Facilities District (SCFD), the Boulder Convention and Visitors Bureau, and the Boulder Hotel and Motel Association - who all share the indomitable Chautauqua spirit!

With your continued support, the Board and staff at Chautauqua look forward to another century of serving our expanding community!

All the best,

SHELLY BENFORD

Chief Executive Officer

Colorado Chautauqua Association

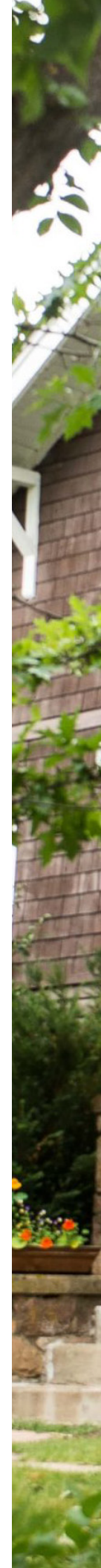


H I S T O R I C

PRESERVATION

In addition to the more than \$1 million Chautauqua spends annually to maintain and preserve the buildings and grounds at Chautauqua, the organization occasionally makes other strategic investments to ensure the preservation of key structures that reflect an important aspect of Chautauqua's history.

In 2017, Chautauqua purchased the Mary H. Galey Cottage, a century-old cottage and the long-time home of Mary H. Galey, a courageous woman whose actions were instrumental in saving the Colorado Chautauqua from ruin in the 1970s. Rehabilitation of the cottage took three years and was completed in 2020. This key structure, now preserved for generations to come, is not only beautiful, but has earned Energy Star status for its environmentally sensitive design and construction.





2020 HIGHLIGHTS:

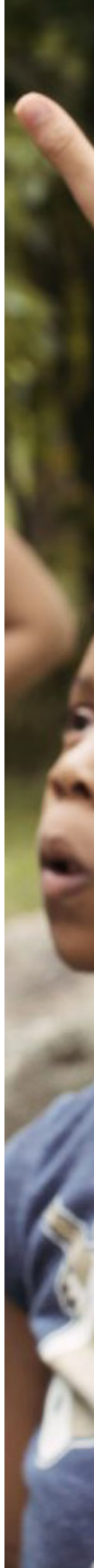
- Renovated the General Store, now managed by Chautauqua for the first time in over 121 years
- Made major capital improvements to 16 historic cottages
- Replaced the historic windmill that stood at the south side of the original Batchelder Ranch House from the 1880's through the 1950's
- Presented at the Preserving Places Conference and led tour for participating delegates

E D U C A T I O N &

OUTREACH

Despite COVID-19 restrictions and limited staffing, Chautauqua found opportunities to engage diverse partners in innovative ways, reaching out to the broader community with our Chautauqua@Home initiative, which included virtual productions of Chautauqua's popular Space Series, Silent Film Series, the Colorado Music Festival and the Boulder Ballet, and an assortment of films, panel discussions and lectures on a variety of diverse topics.

Live community events in 2020 included children's hiking plays, a safe community Halloween Trunk-or-Treat celebration, and another successful production of our increasingly popular WinterFest community event, which included our 2020 Art-in-the-Park initiative. This first-ever public art installation, funded by local sponsors, acknowledged the diverse work of 15 artists and 15 local nonprofits and brought thousands of people to Chautauqua for this safe, socially distanced celebration.





2020 HIGHLIGHTS:

- Hosted the Creative Community Project, Chautauqua's first-ever online art auction, which supported a diverse group of over 40 local artists and the Community Foundation's COVID-19 Response Fund
- Partnered with the City of Boulder, and the United Mexican American Students and Movimiento Estudiantil Chicano de Aztlan to commemorate six local Chicano activists killed in car bombings in 1974, three of them at Chautauqua
- Marked the anniversary of women's suffrage with virtual programs focused on Theodosia Ammons, a Chautauqua resident and President of the Colorado Equal Suffrage Association and women's rights within the Iroquois Confederacy
- Created virtual tours of Chautauqua's most historic cottages, the Gwenthean Cottage and the Mary H. Galey Cottage

C U L T U R A L

RELEVANCE

Cultural relevance at Chautauqua encompasses a wide variety of initiatives including providing “only at Chautauqua” experiences; ensuring that our services and programming remain appealing to a variety of constituencies; and encouraging diversity in all aspects of CCA’s governance, operations, and programming.

Despite the urgency surrounding operational matters in 2020, Chautauqua’s Board and staff recommitted to the organization’s Justice, Equity,

Diversity and Inclusion (JEDI) initiatives, including increasing dialogue around JEDI topics, actively recruiting diverse Board and staff members, and creating more JEDI-related programming. In 2020, this programming included lectures and films related to Chautauqua’s own suffragette, Theodosia Ammons, a tribute to O.T. Jackson, a Black entrepreneur and Chautauqua’s first Dining Hall manager, a memorial for Los Seis de Boulder, and a discussion of women’s rights in the Iroquois Confederacy.



2020 HIGHLIGHTS:

- Chautauqua moved to a self-appointed board in 2020, freeing the Board to appoint more diverse members
- Board members and staff held discussions on racism and staff underwent trainings on unconscious bias, racism in hiring, and other related topics
- Chautauqua forged deep relationships with a diverse group of local artists and nonprofits as part of the Creative Community Project and Art-in-the-Park initiatives

C O M M U N I T Y

PARTNERSHIPS

During 2020, Chautauqua forged deep relationships and developed creative musical and performance partnerships with the Colorado Music Festival, Boulder Ballet, Jeff & Paige, Sans Souci dance ensemble, and a diverse group of local artists and nonprofits. Our Creative Community Project, a collaborative art auction, which benefited Chautauqua, local artists and the Community Foundation's COVID-19 Relief Fund Boulder County, resulted in a lasting collaboration as several artists later opted to participate in our WinterFest 2020 Art-in-the-Park public art project where fiberglass bear cubs were transformed into

enduring expressions of diversity, inclusion, and environmental sustainability.

Participating nonprofits included Blue Sky Bridge, Boulder JCC, Chicano/a Murals of Colorado Project, El Centro AMISTAD, "I Have a Dream" Foundation Boulder County, Imagine!, Leave No Trace Center for Outdoor Ethics, Out Boulder County, RezDawg Rescue, Sister Carmen Community Center, Sober AF Entertainment, The Colorado State Firefighters Foundation, There with Care, Via Mobility Services, and Women's Wilderness.





2020 HIGHLIGHTS:

- Supported CMF's virtual programming launch, including hosting Takacs Quartet rehearsals and virtual performances
- Provided free outdoor space to The Spark's Tales on the Trails, a popular family program that could not have been produced with COVID-19 restrictions
- Partnered with the Boulder International Film Festival to produce their 2021 event at Chautauqua in response to COVID-19 restrictions
- Collaborated with the City of Boulder on continuation of Sustainability and Resiliency Strategy for Chautauqua
- Supported essential healthcare workers and first responders by offering substantial lodging discounts

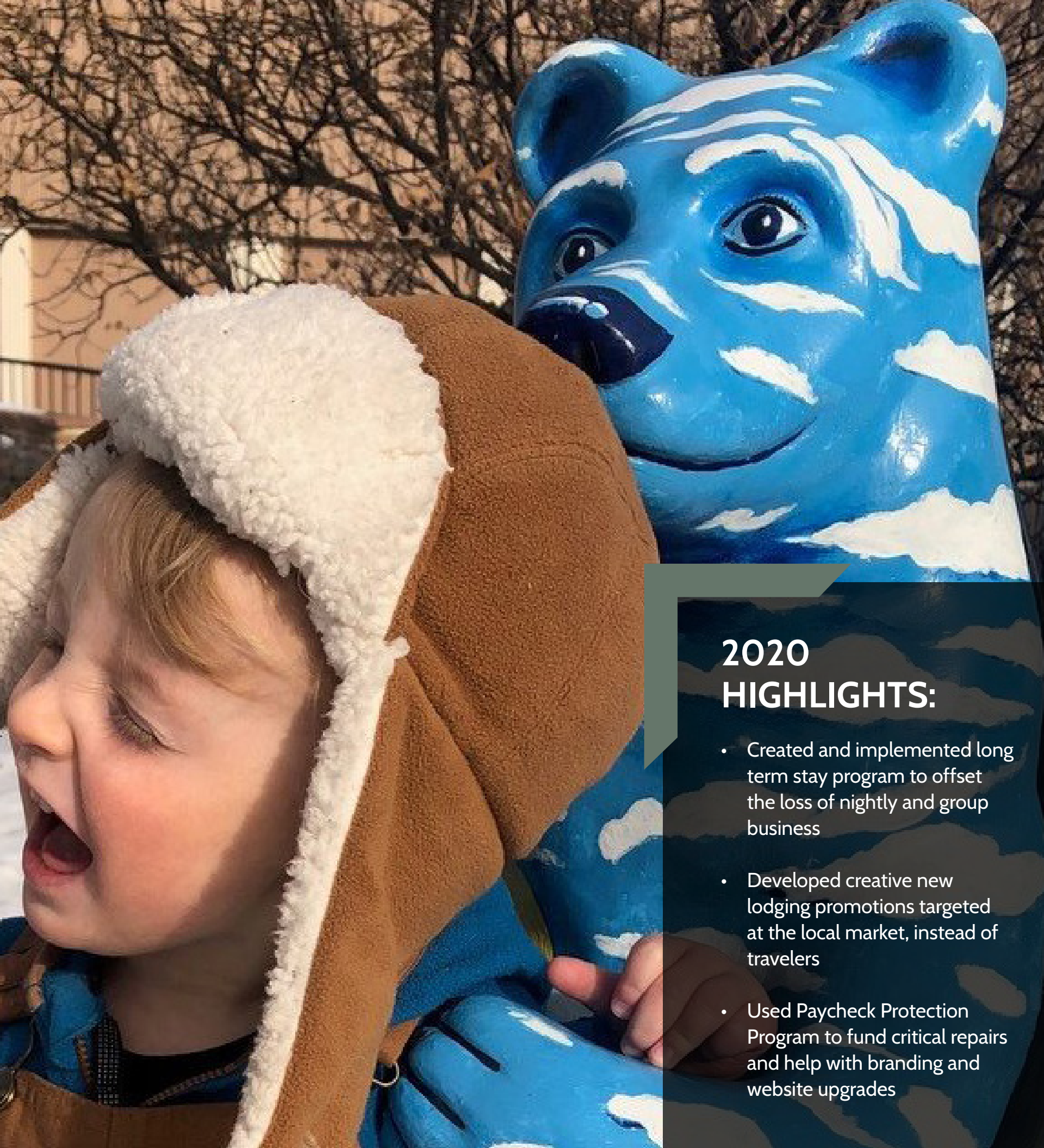
F I N A N C I A L

STEWARDSHIP

Dramatically reduced revenue resulting from COVID-19 restrictions required Chautauqua to make strategic staffing as well as operating and capital expense reductions to preserve cash-flow and prevent erosion of Chautauqua's reserves in 2020. To supplant revenue losses, Chautauqua adapted its lodging strategy to accommodate longer term stays, sought out alternative streams of revenue, including opening the General Store, and focused on securing government grants and

loans intended to support businesses during the COVID-19 crisis.

During 2020, Chautauqua secured and received forgiveness of a Paycheck Protection Program (PPP) loan, received an Economic Injury Disaster Loan (EIDL) and EIDL Advance Grant, and requested and received deferral of an upcoming debt repayment.



2020 HIGHLIGHTS:

- Created and implemented long term stay program to offset the loss of nightly and group business
- Developed creative new lodging promotions targeted at the local market, instead of travelers
- Used Paycheck Protection Program to fund critical repairs and help with branding and website upgrades

O P E R A T I O N A L

EXCELLENCE

In March of 2020, Chautauqua was forced to make major changes to operations in both our hospitality and public events businesses. In response to increasing demand from customers for a safe space to “shelter in place,” Chautauqua established stringent COVID precautions for guests and visitors, including shifting to contact-free check-ins and check-outs, and using lockboxes, emails, and phone calls to welcome guests. Enacting strict safety protocols, actively managing revenue, and maintaining a laser-like focus on customer service

improved our relative position in the market during 2020 and helped generate critical revenue during the COVID-19 crisis.

On the public events side, Chautauqua quickly converted to virtual programming and socially distanced events that could be held outdoors, which kept our community engaged and allowed us to partner with people and organizations who were also grappling with the effects of the COVID-19 crisis.





2020 HIGHLIGHTS:

- No documented cases of COVID-19 among Chautauqua staff members, patrons or guests in 2020
- Established system of Key Performance Indicators to help track performance
- Restructured Public Events department to support ongoing profitability
- Successfully renovated the General Store and installed new inventory and point of sale systems
- Replaced all contract labor with CCA housekeeping staff to improve both quality and efficiency
- Secured pro bono branding support and initiated much-needed upgrades to CCA's website to make it easier for patrons to buy tickets, make reservations and donate
- Implemented new grant tracking software, improving all aspects of grant procurement, including research, submission, and tracking
- Selected and implemented new Board management software to improve board communication

E N V I R O N M E N T A L

SUSTAINABILITY

In 2020, Chautauqua and the City of Boulder continued to make progress on a comprehensive Sustainability and Resilience (S&R) Strategy for Chautauqua. The S&R strategy is meant to address the unique vulnerabilities and opportunities related to fire, flooding, and energy supply and distribution at Chautauqua. During 2020, five study groups focused on Energy Systems, Fire and Heat, Infrastructure, Vegetation, and the potential for a Resiliency District at Chautauqua and brought forth recommendations for addressing these vulnerabilities. The next step is to develop a set of

coherent initiatives that can be implemented in an efficient, coordinated way. Completion of the strategy is expected in 2021.

Committed to making Chautauqua the most sustainable National Historic Landmark, staff continues to explore strategies to conserve water and energy, divert waste from landfills and use earth-friendly products, all while preserving the visitor experience and the Colorado Chautauqua's unique, historic character.





2020 HIGHLIGHTS:

- Received Energy Star certification for highly efficient HVAC systems in newly-renovated Mary H. Galey Cottage
- Completed the third phase of Chautauqua's "district cooling" project, bringing the number of efficiently air-conditioned cottages to eighteen
- Selected and installed custom amenity dispensers in all cottages, eliminating over 22,000 plastic travel sized amenity containers and a significant number of non-recyclable bar soap packages from Chautauqua's annual waste stream
- Replaced coffee in cottages with locally roasted coffee with compostable packaging
- Began revising purchasing policy to promote environmental stewardship and socially and financially responsible procurement practices
- Received six tree donations of varied species through our "Gift a Tree" program, designed to preserve and sustain Chautauqua's tree canopy
- Reduced paper use by converting to digital versions of most documents

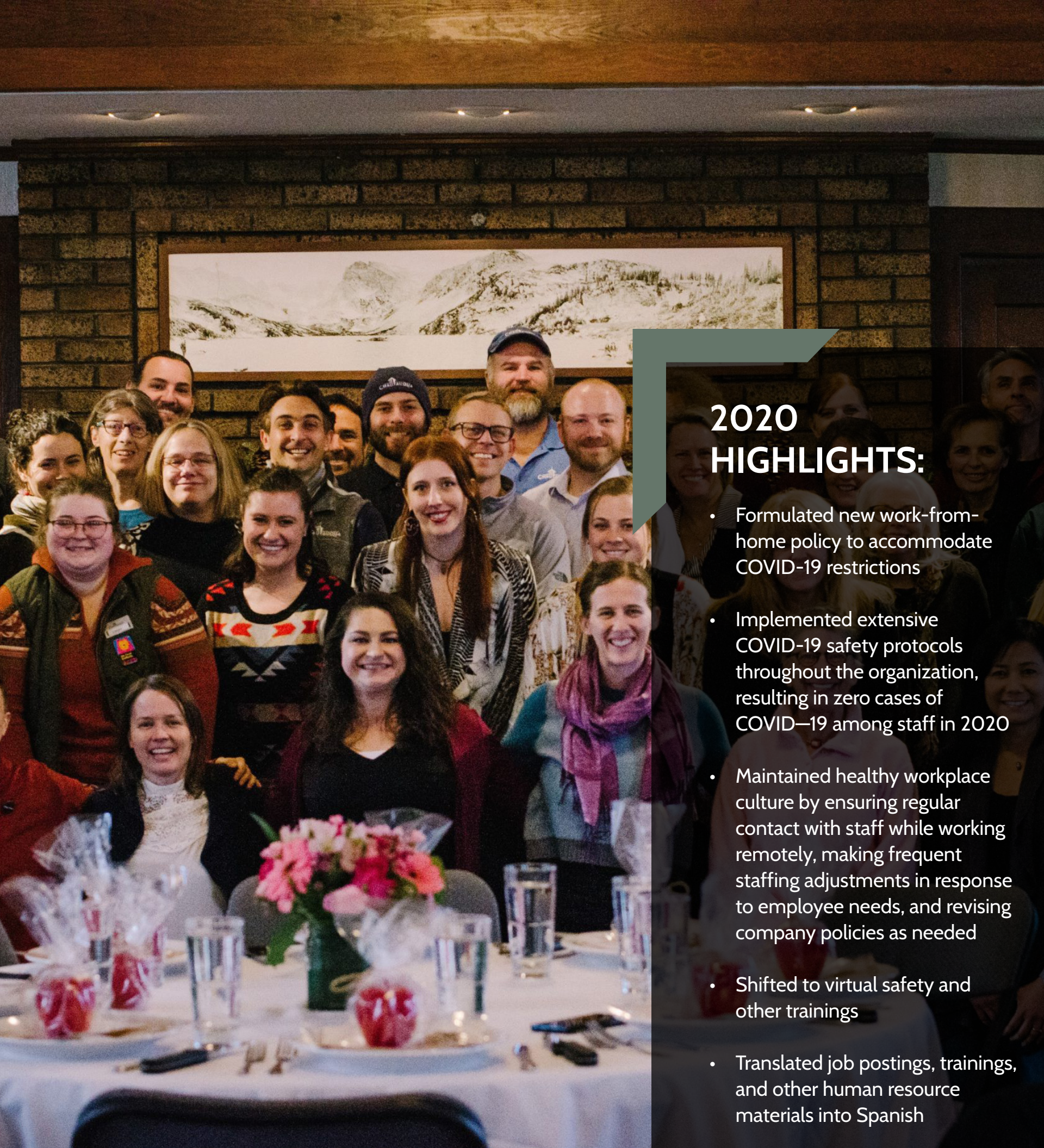
W O R K P L A C E

CULTURE

During 2020, Chautauqua's Human Resources team managed to balance the need for communication and camaraderie while also strictly following Boulder County Public Health guidelines. Non-essential employees were equipped to work from

home and a variety of communication strategies were put in place to maintain workplace efficiency. Meanwhile, essential staff who were required to come to work adjusted to wearing masks, distancing, and temperature checks.





2020 HIGHLIGHTS:

- Formulated new work-from-home policy to accommodate COVID-19 restrictions
- Implemented extensive COVID-19 safety protocols throughout the organization, resulting in zero cases of COVID-19 among staff in 2020
- Maintained healthy workplace culture by ensuring regular contact with staff while working remotely, making frequent staffing adjustments in response to employee needs, and revising company policies as needed
- Shifted to virtual safety and other trainings
- Translated job postings, trainings, and other human resource materials into Spanish

FINANCIAL OVERVIEW

2020 STATEMENT OF ACTIVITIES

Revenue

Earned Revenue	\$2,977,149
Public Support	\$1,180,001
<i>Total Revenue</i>	<i>\$4,157,150</i>

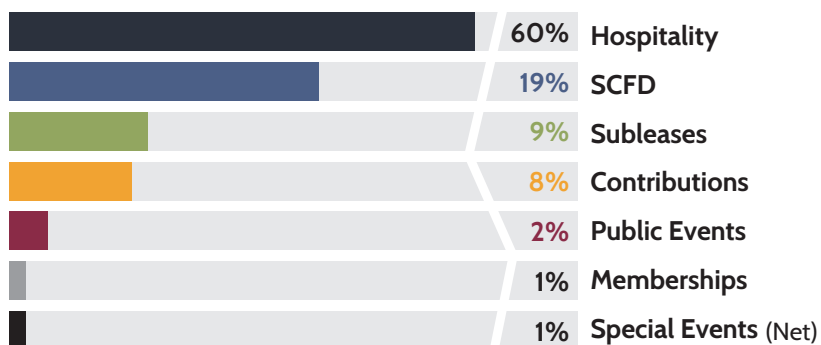
Expenses & Losses

Program Services	\$3,528,549
General Administration	\$1,162,678
Fundraising	\$216,625
Gain on Asset Dispositions	- \$2,303
Gain on Forgiveness of PPP Loan	- \$484,000
<i>Total Expenses & Gains</i>	<i>\$4,421,549</i>

NET INCOME - \$264,399

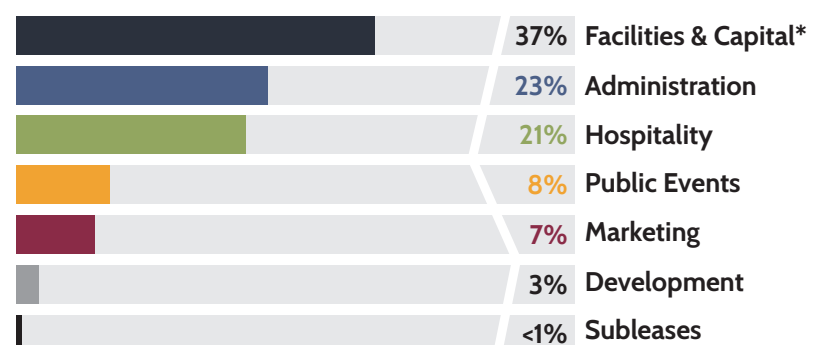
2020 REVENUE FROM OPERATIONS

EXCLUDING INVESTMENT & OTHER INCOME



2020 CAPITAL & OPERATING EXPENSES

BEFORE DEPRECIATION & LOSS ON INVESTMENT



*\$606,177 Capital Expenditures

FINANCIAL POSITION | DECEMBER 31, 2020 & 2019

ASSETS	2020	2019
Current Assets		
Cash and Cash Equivalents	\$3,671,157	\$2,955,889
Certificate of Deposit	\$0	\$1,013,455
Accounts Receivable	\$93,947	\$5,444
Contributions Receivable	\$4,277	\$68,669
Inventories	\$39,676	\$11,983
Prepaid Expenses	\$64,123	\$87,888
<i>Total Current Assets</i>	<i>\$3,873,180</i>	<i>\$4,143,328</i>
Property and Equipment, Net	\$6,228,692	\$6,341,531
Noncurrent Assets		
Cash Restricted for Capital Expenditures	\$187,855	\$159,508
Investments	\$153,519	\$142,990
<i>Total Noncurrent Assets</i>	<i>\$341,374</i>	<i>\$302,498</i>
TOTAL ASSETS	\$10,443,246	\$10,787,357
LIABILITIES & NET ASSETS		
Current Liabilities		
Accounts Payable	\$102,335	\$320,850
Accrued Liabilities	\$442,474	\$501,238
Deferred Revenue	\$852,105	\$808,840
<i>Total Current Liabilities</i>	<i>\$1,396,914</i>	<i>\$1,630,928</i>
Long-Term Liabilities	\$1,139,800	\$985,498
<i>Total Liabilities</i>	<i>\$2,536,714</i>	<i>\$2,616,426</i>
Net Assets		
Without Donor Restrictions	\$7,408,926	\$7,656,925
With Donor Restrictions	\$497,606	\$514,006
<i>Total Net Assets</i>	<i>\$7,906,532</i>	<i>\$8,170,931</i>
TOTAL LIABILITIES & NET ASSETS	\$10,443,246	\$10,787,357

WAYS TO GIVE

For over 120 years, the Colorado Chautauqua Association (a 501(c)(3) nonprofit organization) has relied on the generosity of the community to help preserve the site and spirit of the historic Chautauqua and enrich the lives of all who visit. The Colorado Chautauqua offers donors, visitors, guests, and patrons many ways to contribute to our mission.

■ INDIVIDUAL GIFTS

Your contributions touch all aspects of the organization and keep the site and spirit of Chautauqua alive. Gifts of any size make a difference.

■ RECURRING MONTHLY GIFTS

Become a champion of Chautauqua with a recurring monthly gift. Ongoing donations help us invest in future programming and projects and ensure preservation of this special place for future generations.

■ PLANNED GIVING

Make a big impact with a future gift. When you include the Colorado Chautauqua in your planned giving, your commitment to education, the arts, environmental sustainability, and historic preservation will be part of your honored legacy.

■ MEMBERSHIP

The Colorado Chautauqua has always represented the best of what Boulder has to offer, thanks in part to our members. Our affordable memberships help to preserve the historic grounds of the Chautauqua and build community through unique cultural, educational, social, and recreational experiences.

■ SPONSORSHIP

By sponsoring the Colorado Chautauqua, businesses align themselves with one of Colorado's most extraordinary cultural and historical institutions. Connect with active and engaged audiences and build brand loyalty and visibility, all while providing invaluable support for historic preservation and public programming.

■ MATCHING GIFTS

Matching gifts are an ideal way for businesses to demonstrate the importance of supporting the community. Corporate matching can double or triple an individual contribution on behalf of the Colorado Chautauqua.

■ TREE STEWARD FUND

Gift a tree to a loved one or simply donate to the Tree Steward Fund to preserve and sustain the natural beauty of Chautauqua for generations to come. The Tree Steward Fund is used to treat and remove damaged trees. Donations of any size are welcome and make a difference!

■ COMMEMORATIVE BRICKS

Become a part of the history of the Colorado Chautauqua by purchasing a commemorative brick engraved with your personal message and installed along the path in our beautiful Centennial Garden.

■ GIFT CERTIFICATES

Chautauqua gift certificates are the perfect gift for holidays and special occasions. Available in any amount, gift certificates are redeemable for lodging, concert tickets, events, memberships, or commemorative bricks.

■ SPECIAL CAMPAIGNS

The Colorado Chautauqua runs periodic campaigns to support special needs that emerge. Last year's record setting fire season has brought Chautauqua's wildfire concern into sharp relief. Donations to our Wildfire Protection Fund will help with Chautauqua's fire mitigation activities.

■ LEARN MORE

To learn more about opportunities for giving, please contact Debbie Stewart, Chautauqua's Development Director, at debbie.stewart@chautauqua.com.



T H A N K Y O U T O O U R

SPONSORS



SCFD

The Scientific and Cultural Facilities District (SCFD) is a unique collaboration among seven rural, suburban and urban counties encompassing the Denver metropolitan area. Since 1989, SCFD has distributed funds from a 1/10th of a 1 percent sales and use tax to cultural facilities whose primary purpose is to enlighten and entertain the public through the production, presentation, exhibition, advancement and preservation of art, music, theatre, dance, zoology, botany, natural history and cultural history. The current budget for scientific and cultural organizations in the seven-county area exceeds \$60 million annually.

The Colorado Chautauqua Association is proud to be a SCFD Tier II organization and grateful for SCFD's support. Thank you to the citizens of the Scientific and Cultural Facilities District.



Flatirons Bank

FLATIRONS BANK

Flatirons Bank believes in community and walks the talk as Boulder's only locally owned, locally managed bank. Flatirons Bank's involvement in the community goes well beyond banking, evidenced by their time and commitment to community giving and community engagement. Relationships are important to Flatirons Bank and they strive to provide their clients with the highest level of professional service. Visit Flatirons Bank's energy efficient, LEED-CI award-winning bank at 1095 Canyon Blvd in Boulder, and its branch at 4th and Main in Longmont.



CITY OF BOULDER - BOULDER ARTS COMMISSION

The Boulder Arts Commission (BAC) was established by the City of Boulder Office of Arts and Culture in 1979 to increase awareness and support for the arts. It consists of seven members appointed by City Council for five-year terms.

To bolster the sustainability of our community's cultural organizations, a system of operating grants is a priority for the BAC's cultural grants program. The Colorado Chautauqua is a proud and grateful recipient of Operating Grant funds from the BAC. Thank you to the Boulder Arts Commissioners and the City of Boulder Office of Arts and Culture for their support of our mission.



COLORADO CHRISTMAS LIGHTS

Somerset McCarty and Colorado Christmas Lights have been spreading holiday cheer throughout the Front Range and beyond for the past 10 years. As a Boulder native, Somerset had fond memories of playing on the grounds of Chautauqua as a child. He responded with unbridled enthusiasm when we asked him to bring a touch of winter magic to our campus. His mission to "Spread the Light" speaks to the positivity he embodies in both his personal and professional life.

T H A N K Y O U T O O U R

SPONSORS



Daily Camera



FASTFRAME

CREATE
BOULDER

MAGNUS ANDERSON
Wall-to-Wall Quality



RE/MAX
ALLIANCE
BOULDER

LOQUIZ 



(Nan Anderson*)



University
of Colorado
Boulder

T H A N K Y O U T O O U R

DONORS

1ST/2ND FLATIRON

(\$15,000+)

Anonymous
Anonymous

ROYAL ARCH

(\$5,000 - \$14,999)

Small Business Administration
Henry Beer*
Bill Briggs*
Dr. Scholl Foundation
Polly Fields*
Joseph & Mary Kovach
McIntyre Family Fund
Shannon Morgan
The Collaborative of the SCFD

BLUEBELL MESA

(\$2,500 - \$4,999)

Liz Armstrong
Boulder Chamber of Commerce
Susan & Steve Perrins
Taylor & Kimberly Schollmaier
The Winslow Foundation

SKI JUMP

(\$1,000 - \$2,499)

Anonymous
Linda Arroyo-Holmstrom* &
Don Holmstrom
Jan Burton
Ginny Corsi & Mary Backlund
Dan Corson*

Faughnan Family Foundation
Gardner Grout Foundation
Laura Woods Gunderson &
Cathy Woods Hill

Carob Fund
The Chrysalis Fund
Anonymous
Haidee & Bill Hobler
Pamela Johnson
George Lichter Family
Foundation
Donald Lieberman
Kent & Leslie Miller
Michele and Brad Moore Family
Foundation
Mr. & Mrs. Brian Ratner
Thomas Reed
Tom Robichaud
Cynthia Schmidt*
Eric & Jill Skokan
Brian B. & Kathleen Kelly Spear
Peter Spear*
Peter Szilagyi
Anonymous
Trudy Turvey*
Stefan Viragh
Star Waring* & Dan Johnson
Wren Wirth

MCCLINTOCK

(\$500 - \$999)

Sarah Ahn
Rick Baker
Shelly Benford
The Benevity Community
Impact Fund
Rocky Mountain Climbers Club

Allison Faulconer
Jocelyn & Marc Greer
Michael Harm
Lolita Higbie
Mary Lynne & Doug Hixson
Gary Jacobs
Betty Kaiser
Jon & Kim Kanas
Ellen Kirk
Charles Knight
Valdemar & Elsie Larson
Foundation
Anonymous
Ralph Noistering
Paul Passmore
Dee Perry
Suzanne & Aris Sophocles
Nick & Lillian Sutcliffe
Josh & Ellen Taxman
Alice Trembour* & Rob
Schware
Anonymous
Anonymous

WOODS QUARRY

(\$250 - \$499)

Ann Bekoff
Judy & Elliot Bouillion
Keith Brenner
Shun-Luoi Fong*
Paul's Coffee & Tea Fund
Stanley Garnett
Ben & Kerry Gilbert Family
Fund
AJ Grant
Julianna Giudici
Leslie Gura

Edward Haider
Laurie & Calvin Hanson
Kaye Howe
Carol & Charles Johnson
Helayne & Larry Jones
Dottie & Ray Joyce
Anonymous
Aaron & Olivia Lucas
Michael McCarthy
Anonymous
Jane Menken
Bob Morehouse
Lisa Morzel
Tiffany Myers & Steffan Knapp
Mark Riley & Candice Kasai
Mary Rollins
Sarah Snyder
Stephen & Linda Sparn
Kathryn Strand & Eldon
Haakinson

ENCHANTED MESA

(\$100 - \$249)

Anonymous
Lisa Bailey
Wendy Baring-Gould
Anonymous
Brigham & Pamela Bell
Dianne Blomberg
Jerome Borison
Gary & Amy Bowman
Toni & Daniel Brennand
Amy & Terry Britton
Julie Brown
Frank* & Shelly Bruno
Jim Bumanglag

Kim & Buzz Busey
Anonymous
Sandi Cardillo
Anonymous
Lawrence Cohn
Bohemian Companies
Susan Connelly
Tom & Barbara Corson
Scott Craig
Cheryl Cruickshank
Marie Elaine Curry
Douglas & Rita Dart
Anonymous
Edith Disler
Anonymous
Robert & Louise Dudley
Cal Duncan
Michelle Estrella
Vonnie Ewan
Gretchen Forsyth
Geoff Friefeld
Ken Gamauf
Gail Gitin
Kathleen Gonzales
Bonnie Hail
Scott Hamilton
Michael Hamity
Janet Hatton
Lynn Heilig
Jens Husted
IBM International Foundation
Anonymous
Peter Jaumann
Jessica Johnson & Terry
Shidner
Anonymous
Houston Kempton
Anonymous
Anonymous
Jennifer Knerr
Susan Koral
Adam Krakowsky
Chris Kresge
Mary Lahman
Steven Langer

Loren & Conrad Lattes
Catherine Wesley & John Le
Masurier
Claudia Liedtke
Donald & Joann Leitch
Kerry Lightenburger
Don Losasso
Matt & Lale Lovell
Charles Lynch
Tom Lyon & Yvette Lowney
Catherine MacRae
Anonymous
Thomas Manteuffel
Steve & Susan Maxwell
Stephanie Mayer
K.J. McCorry
Marla Meehl
Elizabeth Meyer
Vicki Midgett
Mark Miller
Kathy & Charles Minter
Nancy & Rob Mohr
Bryan & Axson Morgan
Tom Morris
Robert & Francine Myers
Virginia Newton
Kristine Nielsen
Sofia & Andrew Niemeyer
Julie Oelman & Steve Armstead
Caroline Padden
Kay & Roger Paine
Marylou Parham
Eleanor & Harry Poehlmann
Brad Raley
Anonymous
Charles Riblett
Anonymous
Dave & Jan Robertson
Joan Robinson
Marie Savard-Fenton
Anonymous
Chris & Betsy Shears
David Simon
Rod & Connie Smith
Eric & Martha Stearns

Lyra Mayfield & Charles Stein
William Stephens
Zoe Ann Stivers
Kathryn Strand
Anne & Tio Suman *In memory
of Dossett McCullough
Cindy Terwilliger
Tom & Kathleen Thorpe
Elizabeth Tilton
James Topping
Jean Vogel
Lucy Warner
Patti Wayant
Wynne Whyman
Leslie & Tom Wilke
Sherrie Williams
Gail Williams
Ruth Wright

MEADOW

(<\$100)

Lari Abraham
Carol Lynne Andrews
Patty Angerer
Anonymous
David Apple
Anna Applebaum
Vicki Archer
Tina Arthur
Anonymous
Anonymous
William Battaglin
David Becher
Michelle Beebe
Jessica Benjamin
Jan Berg
Shelly Beshears
Amanda Bickel
Kurt Bittner
David Black
Bruce Blankenship
Linda Boley *In honor of Anne
Ophelia Dowden
Dan Bowden

Gary Bowman
Jim & Judith Bowers
Jeffrey Branson
James Brasseur
Susan Braunstein
Jennifer Bray
Julie Bredengerd
Scott Brenner
Marilyn & Doug Brown
Linda Bryan
Shauna Callahan
Amy & Howard Cantor
Susan Capitelli
Bridget Carlin
Frank Carrannante
David Chadwick
Cimberlie Chambers
Joyce Chase
Deborah Clendenning
Al Clough
Paul Cohen
Matt Cohn
Julia Collins
Judith Reid & Richard Collins
Anonymous
Mary Collins
Carrie Covington
Scott Craig
Tiffany Cunningham
SM Davis
Patricia Dean
Kevin Dennis
Greg Diamond
Jay & Rebecca Dickman
Deidre Dietz
Peter Dimarzio
Thomas Donahue
Anonymous
Robert Dornan
Annie Dornbush
Jennifer Dossett & Jon Murray
Pat & Bruce Doyle
Barbara Duffner
Mary Anna Dunn
Roxane Dupuis

Jerome Duran	Isabelle Johnson	Amy Murin	Oak Slater
Irene Duran	Douglas Jones	Marc Musyl	Anonymous
Patrick & Maryann Edwards	Mina Kidd	Anita Nebel	Bart Stevens
Kathleen Elder	Elizabeth Knees	Kelleigh Nebergall	Steve Stewart
Nancy Endly	Robert Knous & Caroline Fisher	NetApp Inc.	Isabel Stewart
Elizabeth Farrar	Norman Koren	Nims Family	Deanna Stolberg
John & Mary Ann Farrington	Richard Kraemer	Suzanne Ohlson	Julie & Robert Stuenkel
Ben Fenton	Stephanie Krause	Scott Oja	Patricia Stutz-Tanenbaum
Dennis Flom	Alexander Krausz	Jon Olson	Denise & Gary Terrazas
William & Ann Ford	Lauren Kroknes	Sarah Oswick	Barbara Terrazas
John Forester	Anonymous	Enlin Pan	Dr. Scott & Sue Thomas
Barbara Frank	Lois & Dick LaFond	Pearsall Family	Alan Thompson
Ann French	Lisa Lai	Lara Peterson	Jami Thompson
Philip Friedman	Sharon Langfeldt	Michael Peterson	Karen Thompson
David Fulker & Nicky Wolman	Terre Lantzy	Preston Pingry	Luis Toro
Jill Gartland	Brian Larsen	Lisa Preble	Tracy Travis
Catherine Long & Dennis Gates	Beth Larson	Megen Princehouse	Paul Turgeon
Bob & Jocelyn Gebhardt	Joshua Larson	David Raduziner	Jack & Sophie Walker
Andrew & Francesca Gettelman	Paul & Joan Lavell	Kim Ralston	Lindsey Walker
Miriam Gilbert	Roni Lavine	Charles & Mary Randall	John Webb
Lynn Gilbert	Janice N Law	Nancy Raymond	Helen Whitbeck
Traci Gillespie	Andrew Lee	Judy Reaven	Sara Williams-Mann
Teri Golden	Teresa Little	Cathy Regan	David Williamson
Diane Goodwin	Margaret A. Lloyd	Elisabeth Relin	Craig Williamson
Gordon Family Giving Fund	James Long	Susan Ringoen	Vivian L Wilson
Anonymous	Harry Love	Anonymous	Dan Winkler
Regina Gray	Melanie Love	Valerie Rosenkrantz	Tina Winzent
David & Beth Graybill	Alida Lubeck	Dawn Ross	Cynthia Witter
Cathy Greer	Linda Lunbeck	Eric Roth	Francy Wolcott
Jessica Gronich	Tracey MacDonald	Kate Ruth	Phil Wong
Karen Halverson	Constance Mackin	Marjorie Schaffner	John & Kelly Wyatt
Anonymous	Angela Maly	Kevin Schatzle	Elizabeth Yodice
Joel Hegge	Dawn Mann	Kimberly Schifano	Barbara Zabel
Anne Henderson	Stuart Mann	Scott Schiff	Kim Zoller
Janet Hill	Anonymous	Ella & David Schleicher	Joseph Zuchter
Taryn & Mark Hinken	Steve Markman	Kathy Scholz	
Anonymous	John & Mary Markovetz	Kathy Seader	
Robert Horen	Rebecca Martin	Neal & Barbara Seitz	
Rebecca Hornbrook	Nancy McLemore	Michael Shepard	
Lisa Jackson	Michael McNair	Cathy Shoenfeld	
J Jameson	Rob & Kate Melich	Monica Short	
Mark Jarman	Hope Michelsen	Thomas Shykula	
Sharon Jenkins	Cory Miglizzi	Linda Silverthorn	
Ken Jochim	Cristine Milton	David & Laura Skaggs	
Bill Johnson	David Michael Monasch	Marina Skumanich	

**Denotes CCA Board
of Directors Member*

SHARON + MANFRED
SCHWOCH
MET ON BIKES
07-04-85



B O A R D O F

DIRECTORS

Nan Anderson

CHAIR

Star Waring

VICE CHAIR

Frank Bruno

TREASURER

Dan Corson

SECRETARY

Linda Arroyo-Holmstorm

Bill Briggs

Polly Fields

Shun-Luoi Fong

Bruce Neumann

Margaret Ryder

Brett Shelton

Peter Spear

Alice Trembour

Trudy Turvey

Mary Young







Chautauqua

BOULDER CO

MISSION

The Colorado Chautauqua preserves, perpetuates and improves the historic site and spirit of Chautauqua by enhancing its community and values through cultural, educational, social and recreational experiences.

VALUES

The Chautauqua experience is based on lifelong learning, love of nature, voluntary simplicity, and music, oration and the arts. Historic significance, traditions, cultural relevance, respite and enrichment are among the community benefits provided by the Colorado Chautauqua.

WWW.CHAUTAUQUA.COM

 COLORADOCHAUTAUQUA  COLO_CHAUTAUQUA  COLOARDAOCHAUTAUQUA  COLORADO_CHAUTAUQUA

900 BASELINE ROAD, BOULDER, CO 80302