

Summary

This application is for the reconstruction of the Chautauqua Café, an outdoor covered dining pavilion that occupied the site between the Chautauqua Dining Hall and Cottage 100 between 1898 - 1905. The proposed pavilion is ~ 47’ (L) x 24’ (W) x ~3’ (H) with an ADA complaint bridge connected to the porch of Cottage 100 to allow access to the existing ADA ramp.

Background

When the Colorado Chautauqua was established in 1898, the Chautauqua Dining Hall was the first building completed. In 1899, Cottage 100, commonly known today as the “General Store,” was built to the west of the Dining Hall and functioned as the Chautauqua Secretary’s office. In 1899, an open-air wooden pavilion with a canvas awning was built between the two buildings. This structure, referred to as the Café, functioned as an adjunct to the Dining Hall. It served as an informal dining space and, as archival material states, offered “coffee, short orders and cold meats.”

Based on CCA’s archival photos of the Café, CCA staff estimate that the original pavilion measured approximately 47’ x 24’. The Café sat between the Dining Hall and Cottage 100, but it did not physically connect to either building. In 1900, the wrap around porch was added to the Dining Hall. The Café was ultimately removed in 1905.

Proposal

CCA proposes to recreate this historic feature in the original location between the Dining Hall and the General Store. The proposal is for a 47’ x 24’ x 3’ open air wooden pavilion with stairs on the north elevation and a canvas awning roof. The proposal also includes the construction of an ADA walkway connected to the porch of Cottage 100, so visitors can access the space through the existing ADA ramp at the west end of the General Store porch.

For over a decade, staff, board members, and community members have discussed the possibility of reconstructing this cafe pavilion as part of CCA’s commitment to historic preservation. Not only is the pavilion an historic reconstruction that will benefit the thousands of visitors who cherish and adore the Chautauqua National Historic Landmark, it will also provide much-needed additional outdoor seating space for safe gathering and social distancing, which has become imperative in the age of COVID-19.

The proposed project varies slightly from a true reconstruction as defined by the Secretary of the Interiors Standards for the Treatment of Historic Properties sited below:

“Reconstruction is defined as the act or process of depicting, by means of new construction, the form, features, and detailing of a non-surviving site, landscape, building, structure, or object for the purpose of replicating its appearance at a specific period of time and in its historic location.”

All preservation projects conducted by CCA, regardless of their magnitude, are carefully reviewed by the CCA Building and Grounds Committee and the City of Boulder Landmarks staff. CCA’s Building and Grounds Committee has reviewed this proposal in depth, and after much discussion, has deemed the proposal appropriate. CCA has also informally discussed the possibility of reconstructing the pavilion with Landmarks staff and received positive feedback. CCA is now seeking approval for the project from the Landmarks Board.

Chautauqua Construction Season




Chautauqua has a moratorium on construction during the summer season. This begins Memorial Day weekend, May 28, 2021.

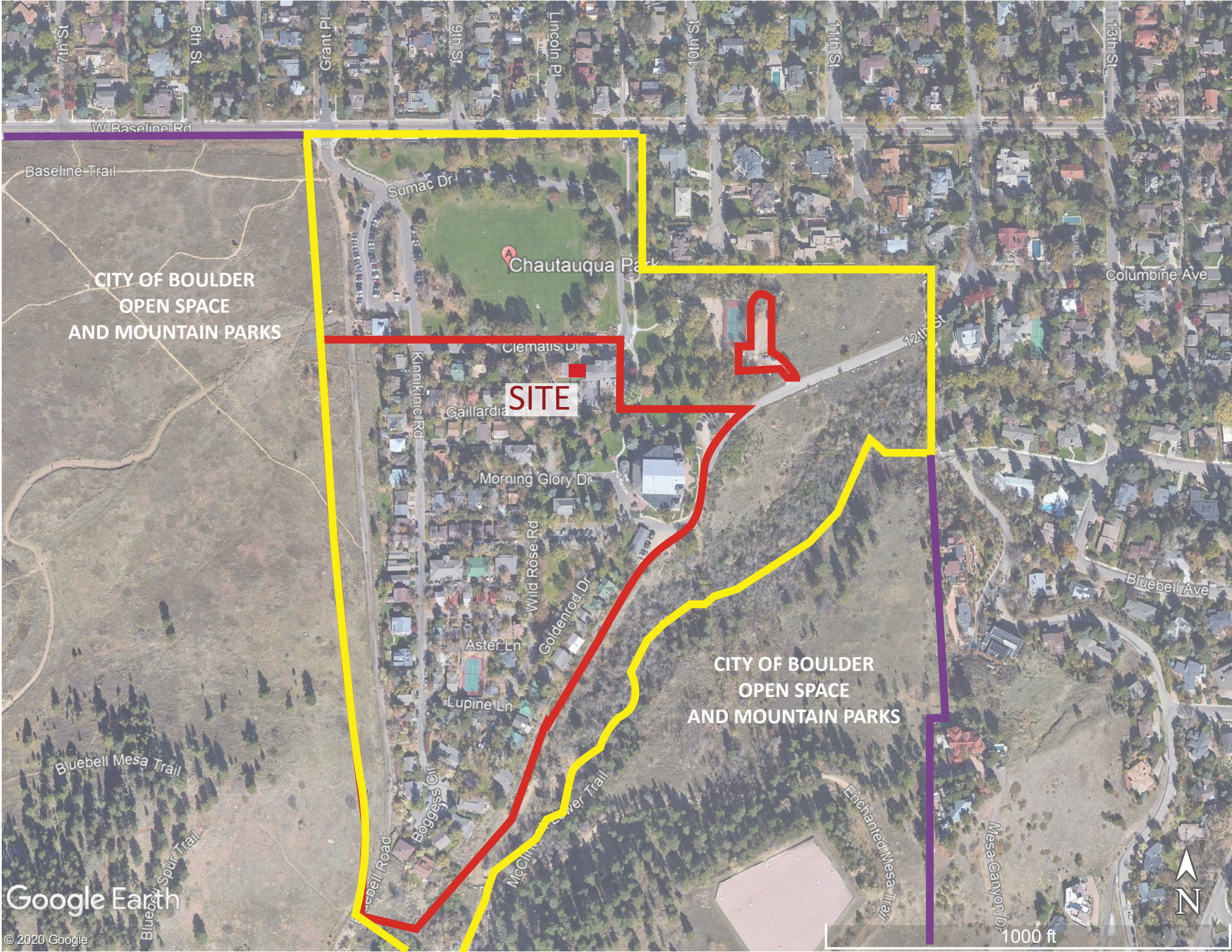


View of the cafe pavilion nestled between the General Store and Dining Hall



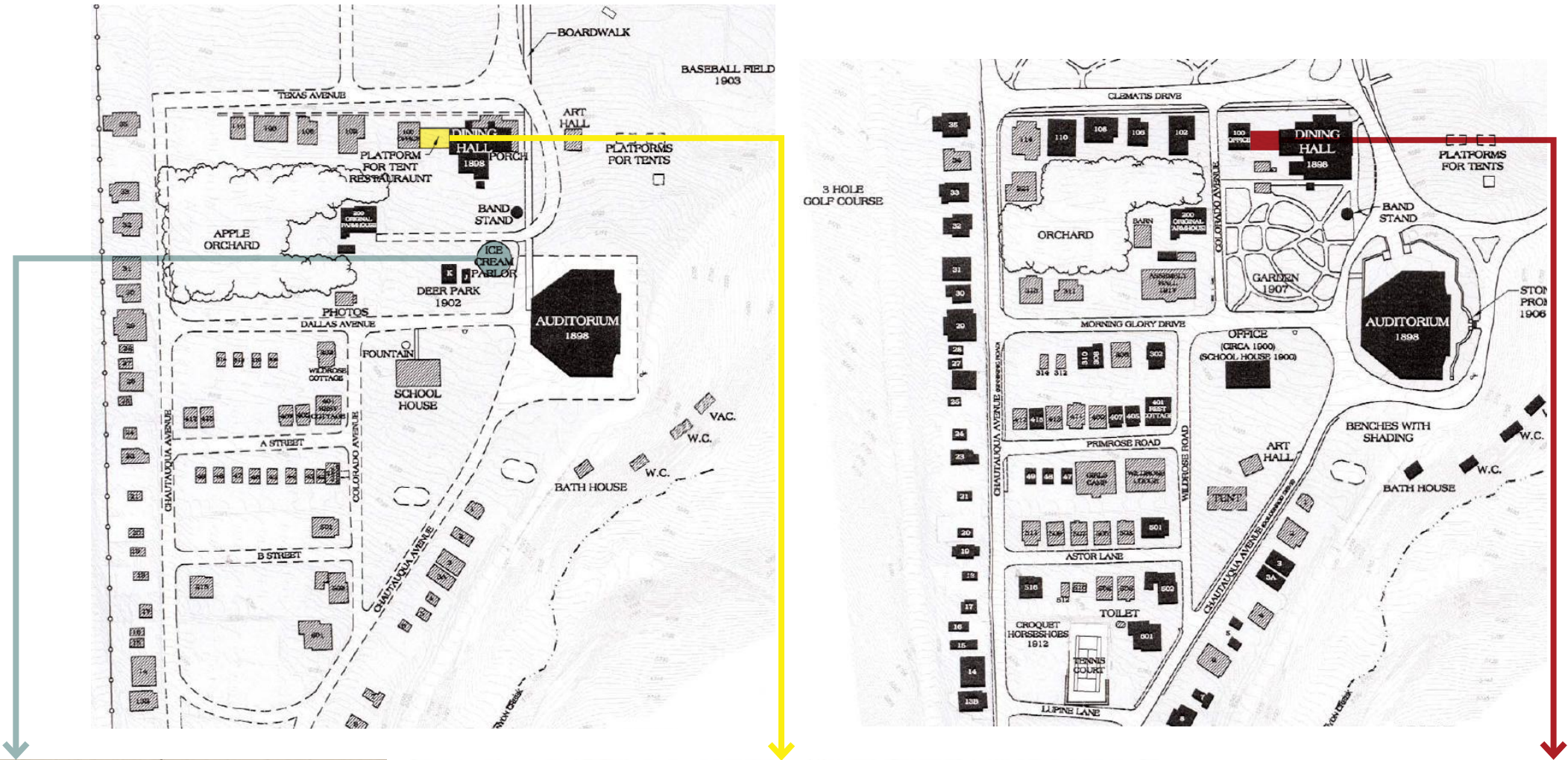
Interior view of the cafe pavilion looking toward Dining Hall

-  HISTORIC DISTRICT BOUNDARY
-  LEASE AREA BOUNDARY
-  CITY OF BOULDER OPEN SPACE AND MOUNTAIN PARKS



1899-1905 (Cafe Pavilion and Ice Cream Pavilion shown on map)

1906 (Cafe Pavilion and Ice Cream Pavilion removed)



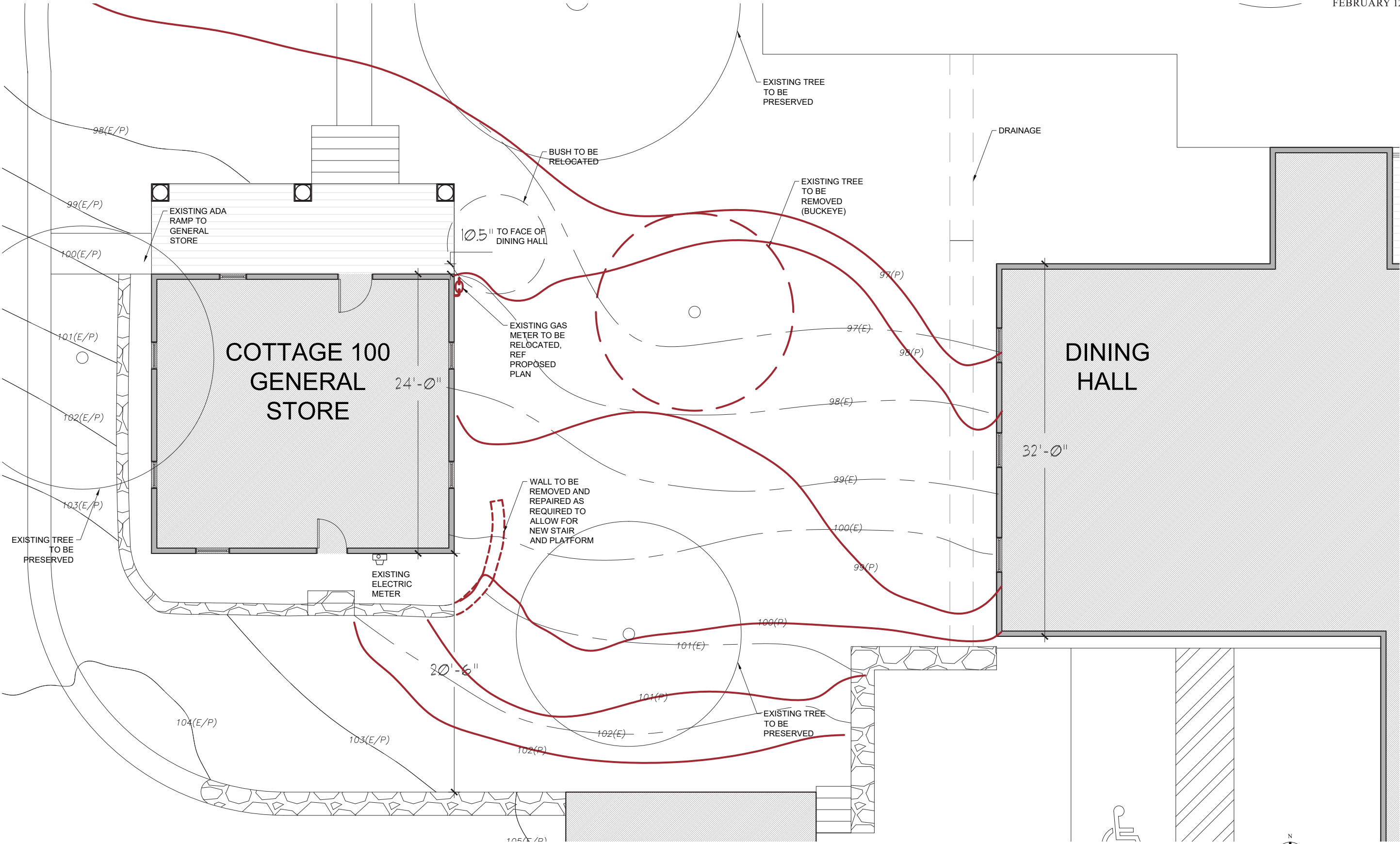
Ice Cream Pavilion

Historic Cafe Pavilion

Proposed Pavilion

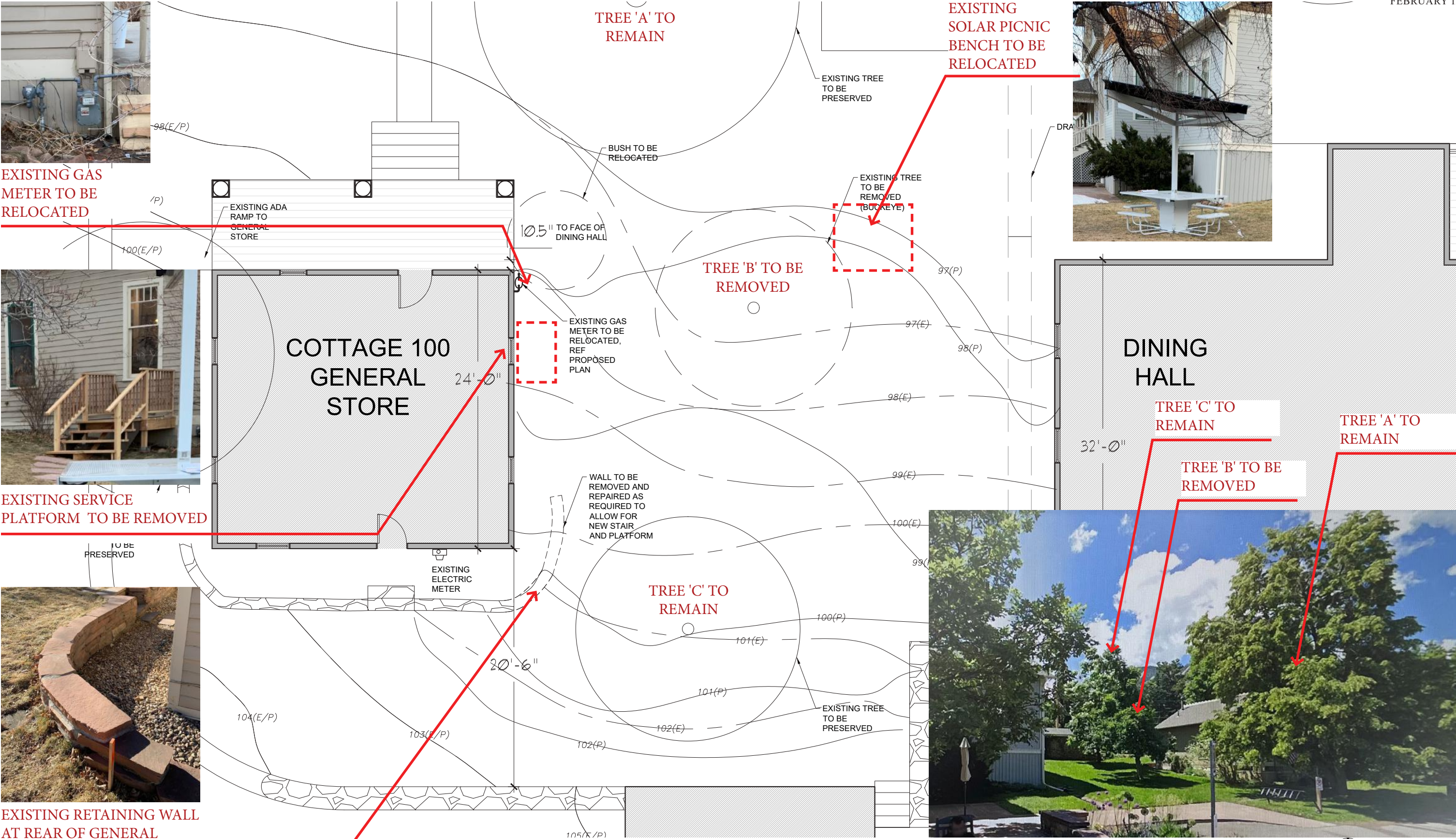


Existing site between the Dining Hall (left) and the General Store (right).



Scale: 1/8" = 1'-0"

EXISTING SITE PLAN



EXISTING GAS METER TO BE RELOCATED



EXISTING SERVICE PLATFORM TO BE REMOVED



EXISTING RETAINING WALL AT REAR OF GENERAL STORE TO BE ALTERED

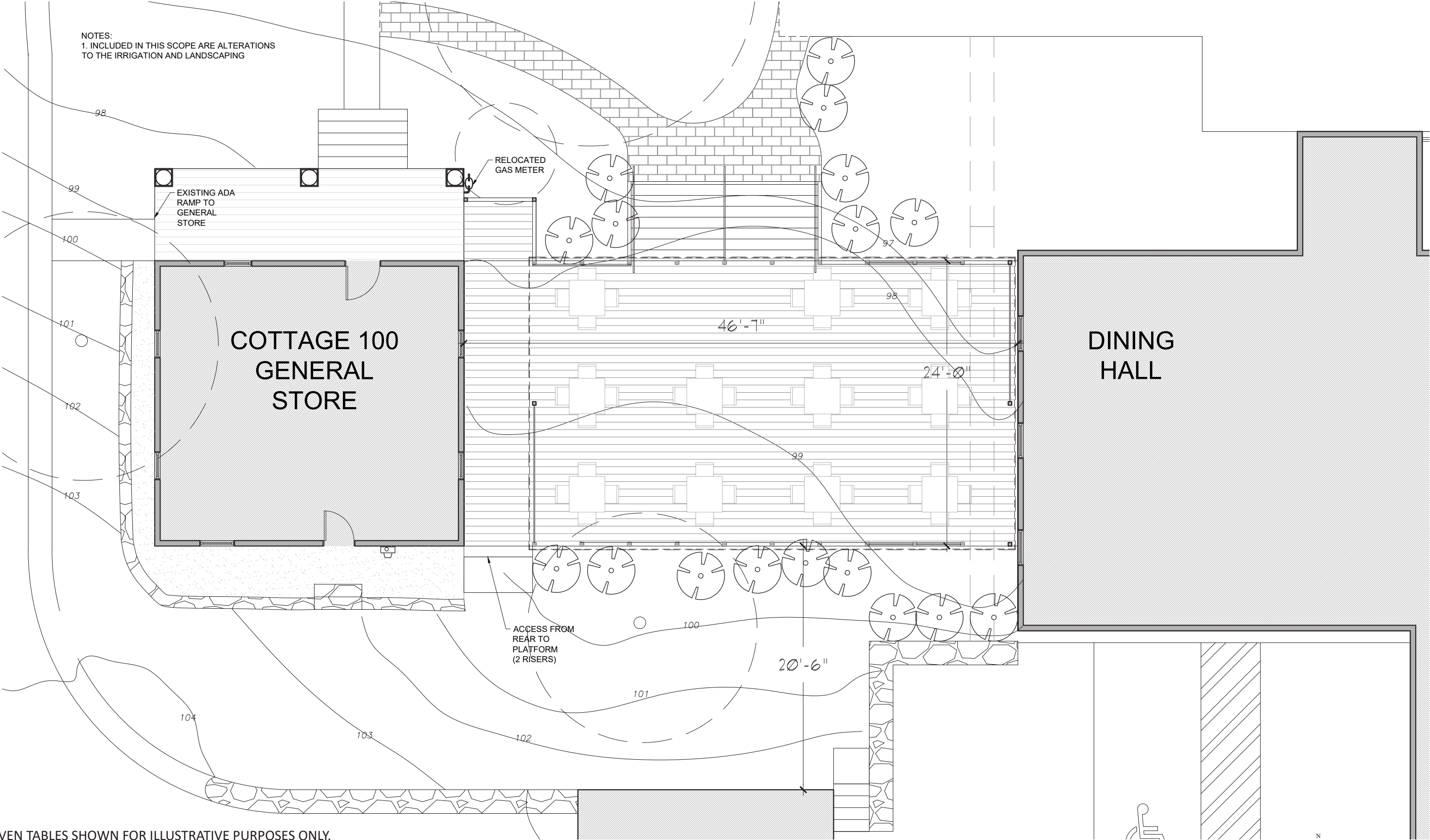


EXISTING SOLAR PICNIC BENCH TO BE RELOCATED

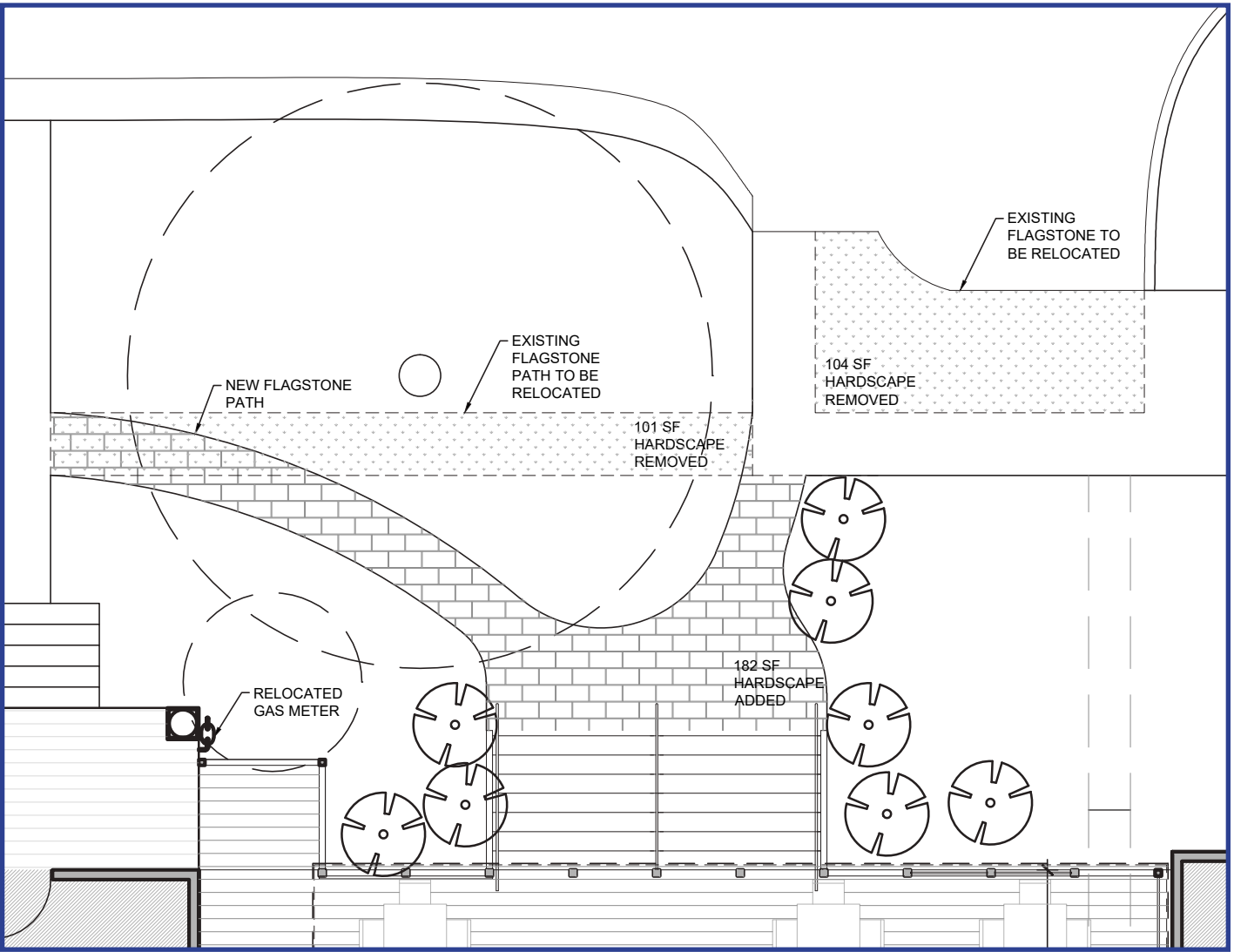


EXISTING TREES ON SITE

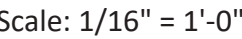
Scale: 1/8" = 1'-0"



FEBRUARY 12, 2021



182 SF OF HARDCAPE ADDED





Historic Cafe Pavilion



Proposed Cafe Pavilion



Exterior view of the cafe pavilion situated between the Dining Hall and General Store

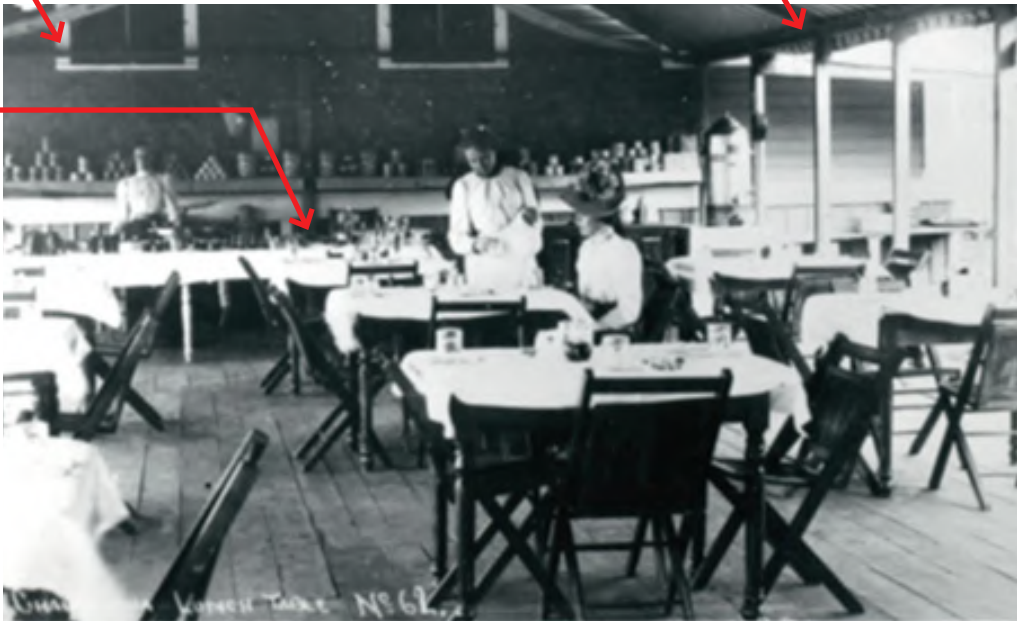


Exterior view of the cafe pavilion looking from the General Store to the Dining Hall

Dining hall windows allow viewing into cafe

Wood trusses occur at every other column

Center wood column at each end



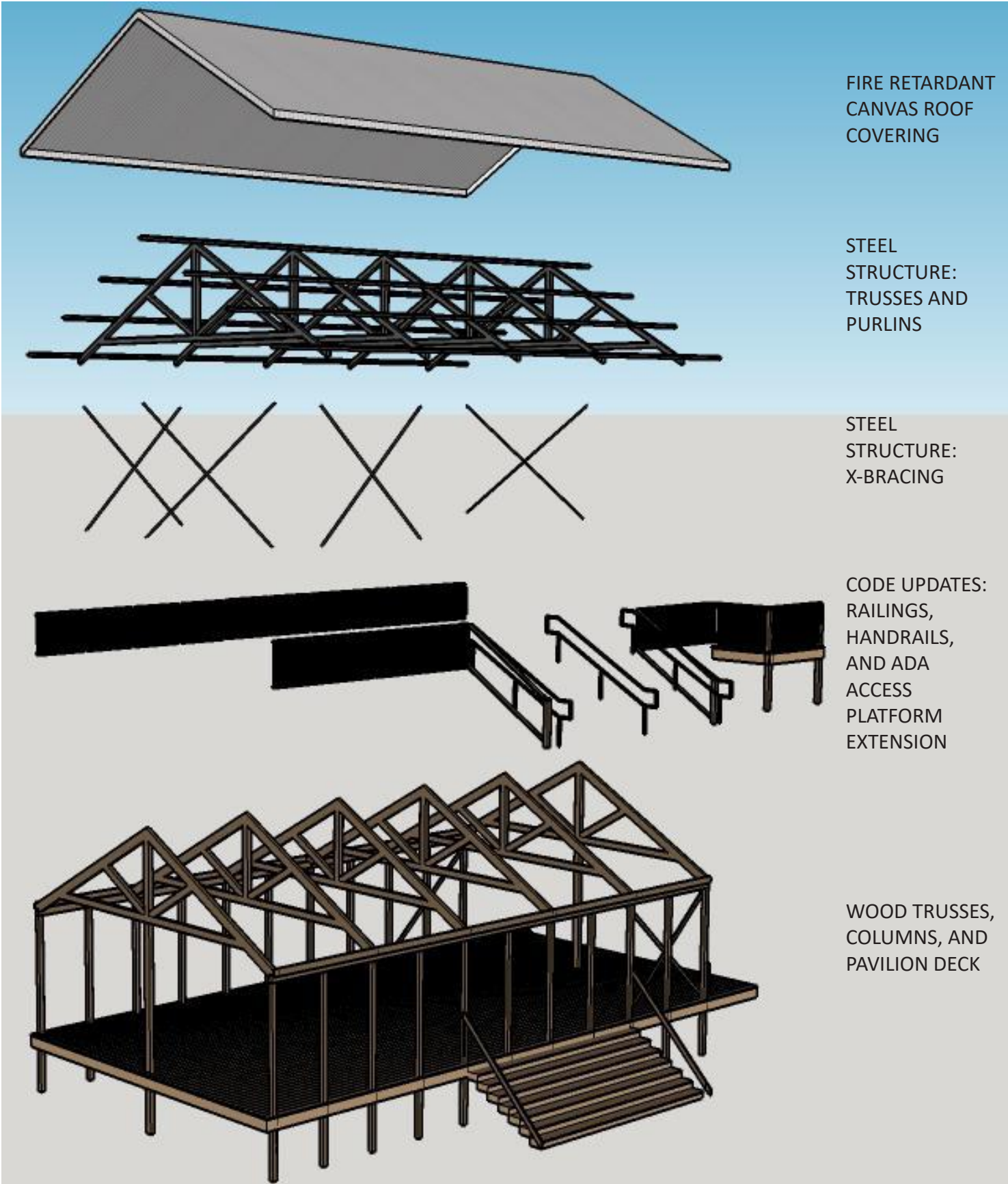
Interior view of the cafe pavilion looking toward the Dining Hall

(11) 4x4 wood columns at regular intervals

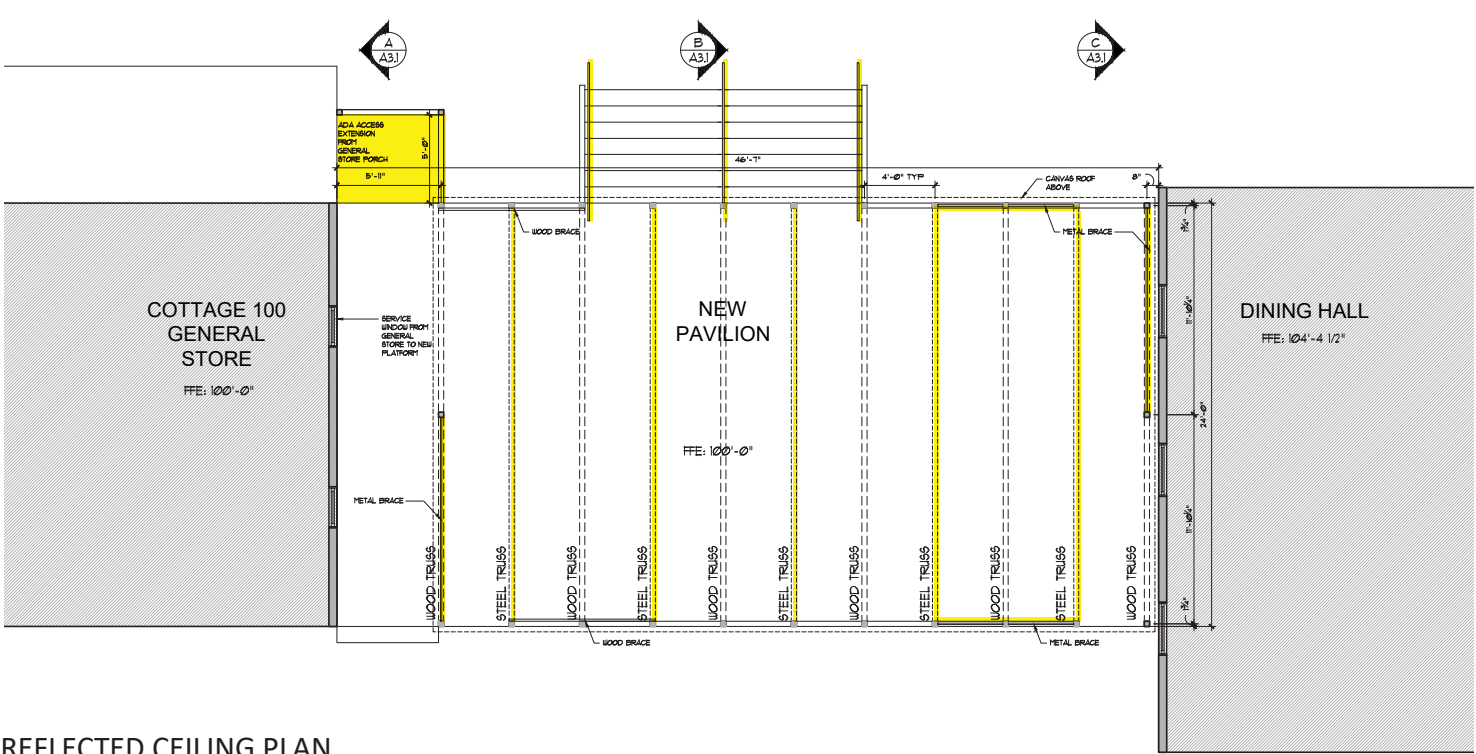
Wood x-brace



Exterior view of the cafe pavilion looking toward the Dining Hall



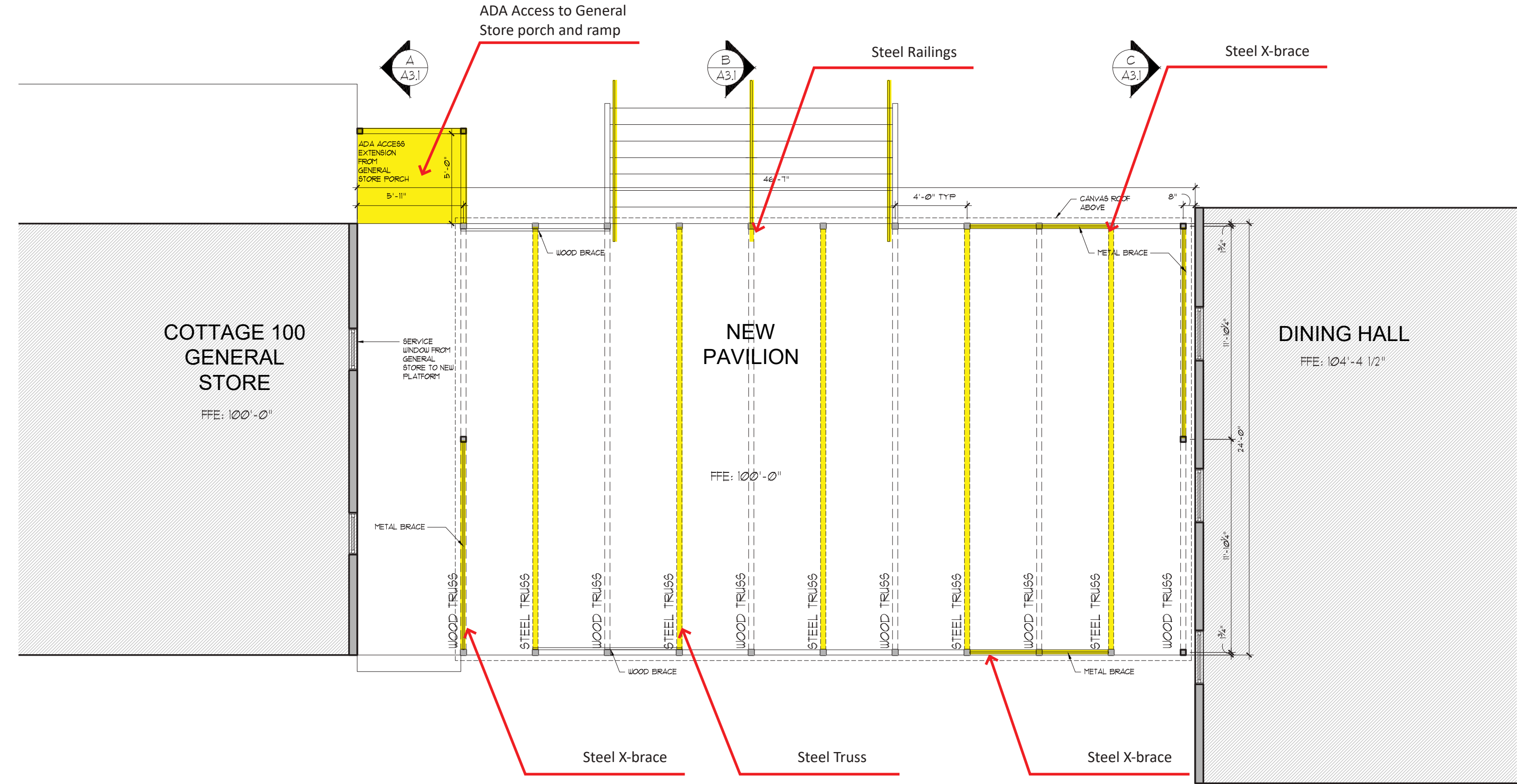
EXPLODED AXONOMETRIC VIEW OF THE CAFE PAVILION



REFLECTED CEILING PLAN



COMPOSED CAFE PAVILION



NTS

Pavilion is structurally independent and not physically attached.

X-bracing is required at each face of the structure for rigidity without tying into the adjacent buildings

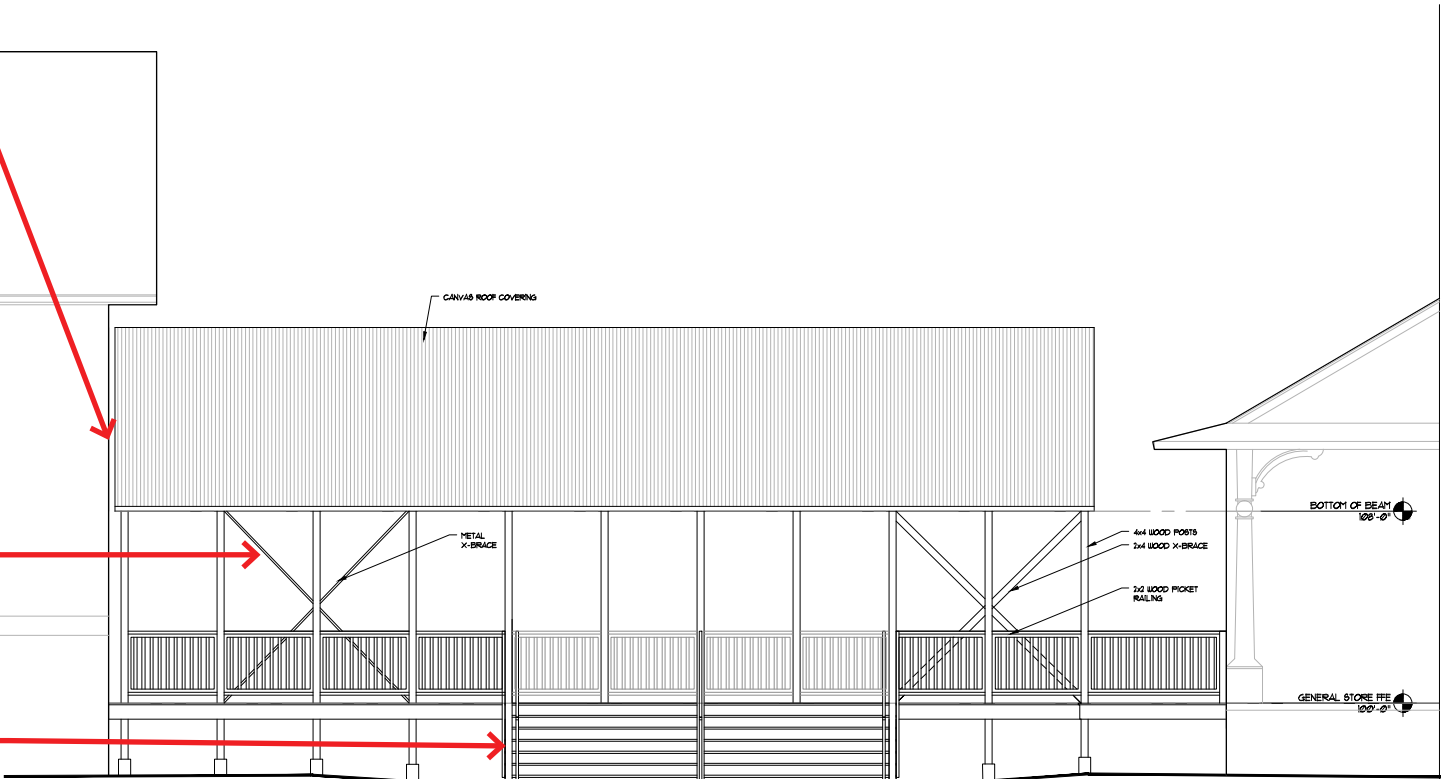
Entry stair to cafe pavilion



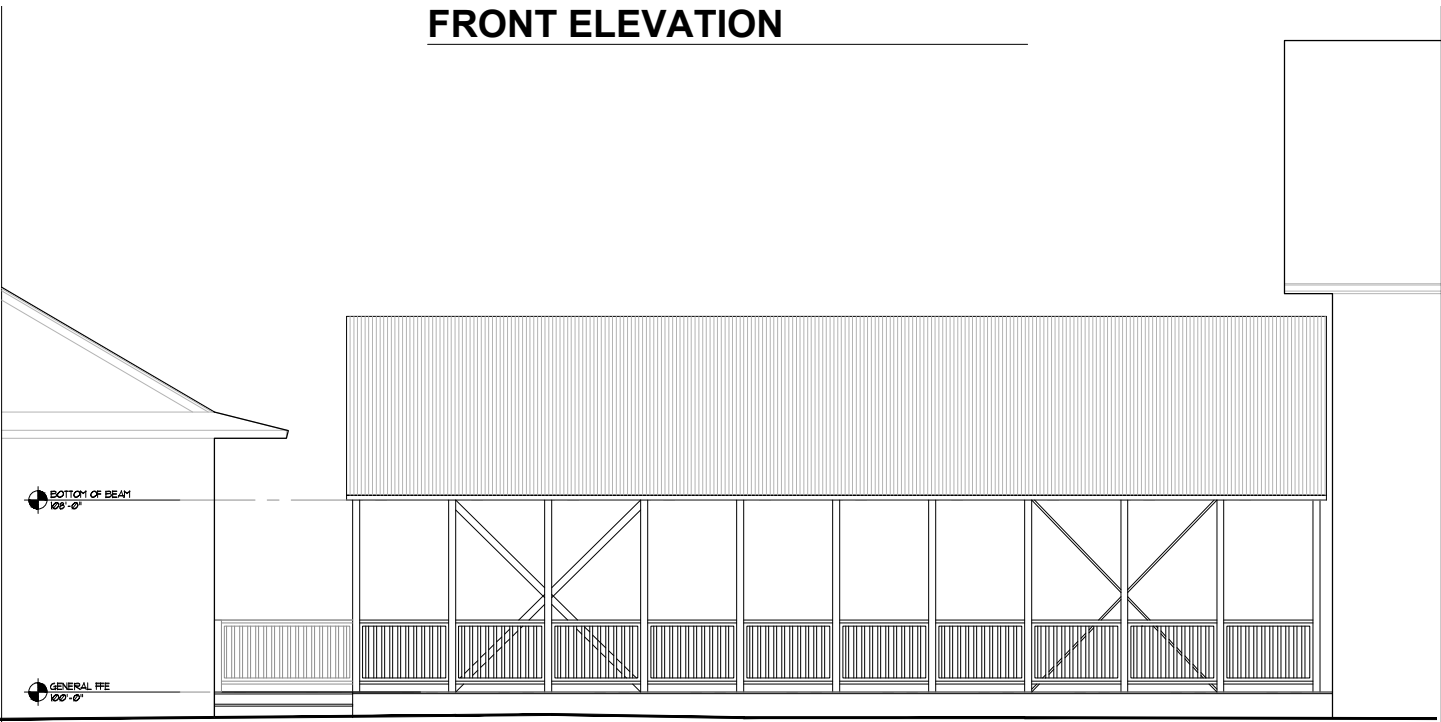
Historic railing at stair



Proposed wood railing at stair with required code modifications

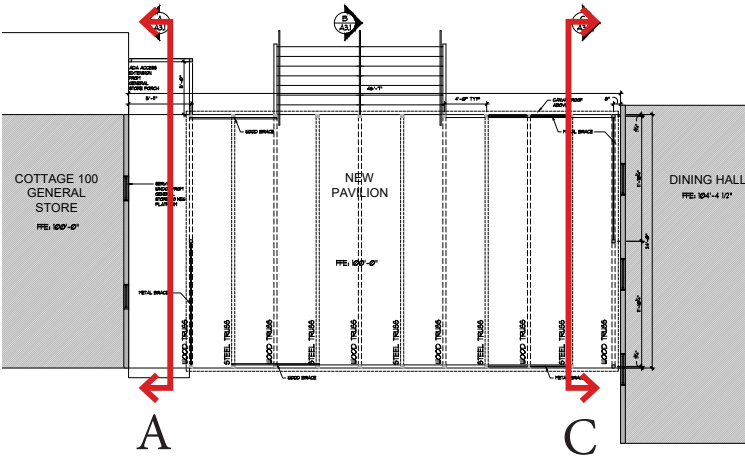


FRONT ELEVATION

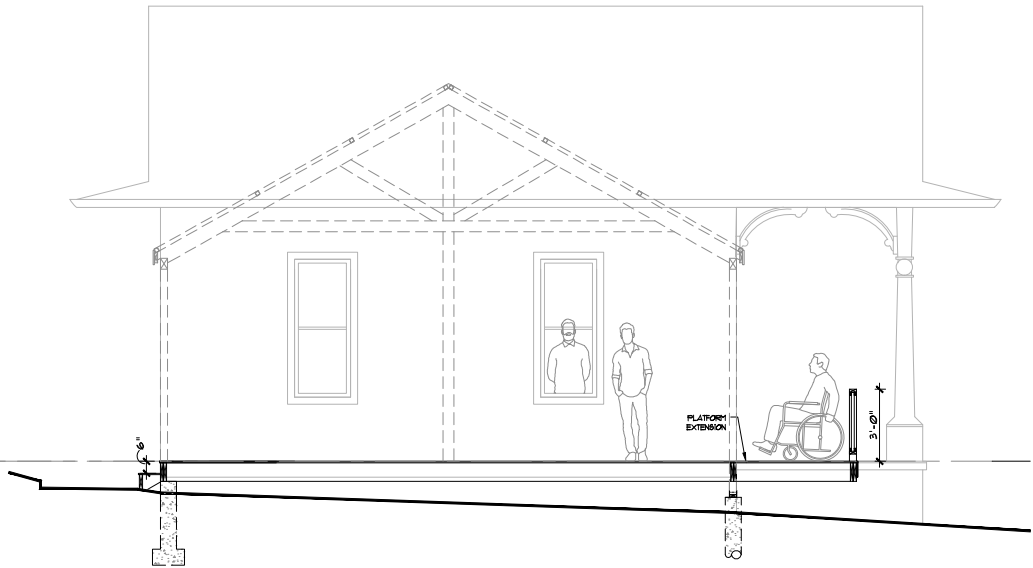


REAR ELEVATION

Scale: 1/8" = 1'-0"

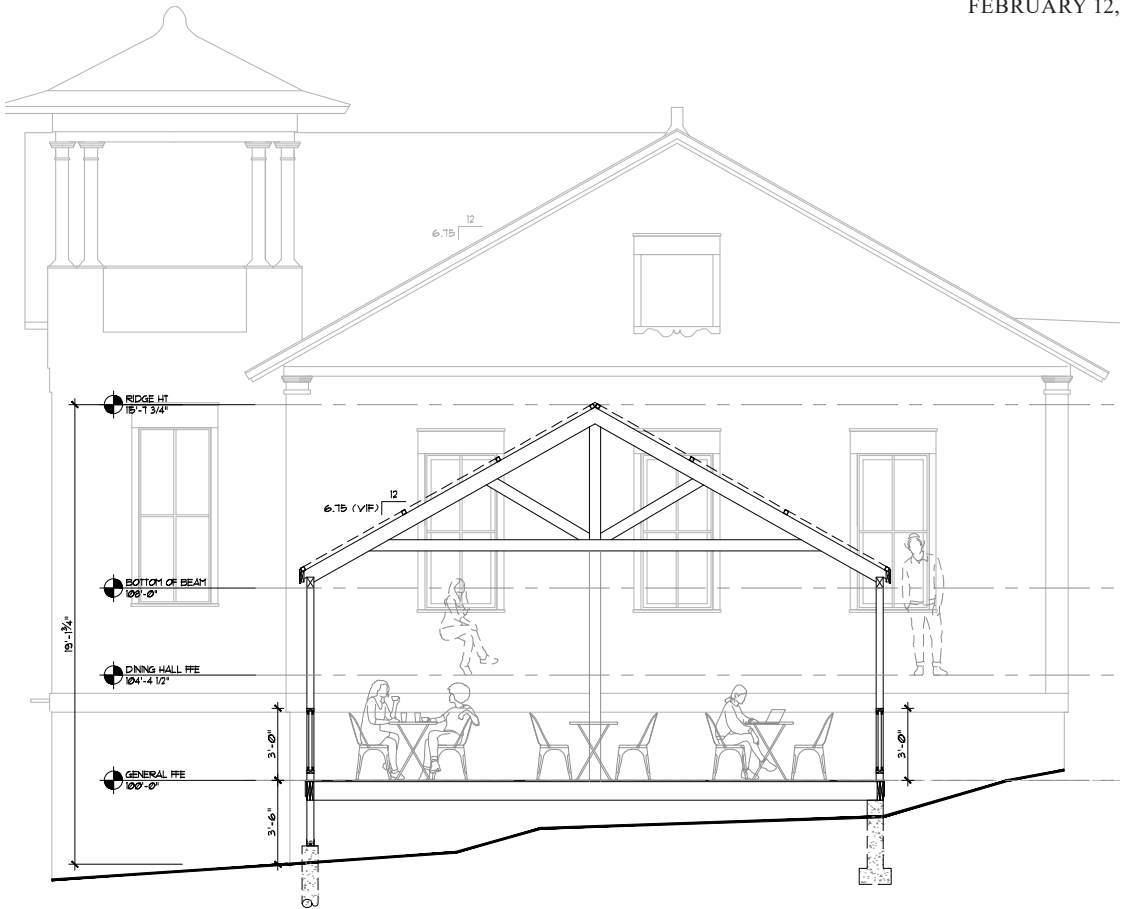


SECTION KEY



SECTION A

Section at service window



SECTION C

Relationship between Cafe Pavilion and Dining Hall

Scale: 1/8" = 1'-0"



The cafe pavilion can be illuminated with market lights at night



View of service window from under the pavilion cover



View from a Dining Hall window to the cafe pavilion



View from the Cafe Pavilion to Chautauqua Park



ADA platform extension: Note: fall protection at General Store via planter boxes.



Cafe Pavilion entry from Clematis Drive. Note: all wood used in the Cafe Pavilion shall be fire resistant with a natural finish.



Historic Cafe Pavilion



Proposed Cafe Pavilion